



Bayliner 275

£29,950.00

LYING NYA HORNING - NYH2400 - P/EX POSSIBLE

BAYLINER 275 - 2006, 1 x Mercruiser 260hp petrol engine. 6 berth accommodation with 1 toilet and shower. Spec including bow thruster, electric windlass, shore power, battery charger, inverter, immersion, hinged radar arch, VHF, BSC 06/20. A well presented example of these popular sports cruisers with a low airdraft, sociable cockpit and generous accommodation for her size.

Manufacturer:	Bayliner	LOA:	26'05 (08.05m)
Model:	275	Beam:	09'00 (02.74m)
Year:	2006	Draft:	03'03 (00.99m)
Construction:	GRP	Type:	Sports Cruiser
Hull/Kell Type:	Planing	Berths/Cabins:	6 Berths in 1 Cabins
Fuel Capacity:	Litres	Showers/Toilets:	1 Showers, 1 Toilets
Engines:	1 x 260HP, Mercruiser	Fuel Type:	Petrol
		Drive Type:	Stern drive



Forward berth arrangement



Galley

ACCOMMODATION

- Compact but comfortable 6 berth saloon layout with a fixed double berth, a dinette to starboard which converts to berths and a fixed double mid cabin berth under the cockpit sole.
- The galley is located to the port side of the saloon space opposit the dinnete and is fitted with avonite type composite work surface with storage under. Galley equiptment comprise of the standard alchol/electric (240v) stove, Microwave (240v), Fridge (12v) and a stainless steel sink.
- Toilet/ shower compartment is equipped with jabsco type pump toilet which flushes to a holding tank, shower fittings and molded sink.
- The mid cabin provides a large double berth.
- The cockpit has ample seating for 6/8. Arranged with a lounge to port, helm possition to starboard, a convertable forward/aft seat, cockpit table and folding aft transom seat. Deck asscess forward is via a fold out centre windscreen section, bathing platform access is via transom door. The radar arch on this vessel has been modified to hinge aft in order to reduce the vessels air draft.

GALLEY

- Origo single alcohol /electric stove
- Microwave
- Fridge
- Stainless sink with mixer tap
- Cupboard and locker stowage

OTHER EQUIPMENT

- CD/radio player
- TV/DVD
- Glomex signal booster

MECHANICAL ELECTRICAL

- Side power bow thruster
- Electric windlass
- Shore power
- Battery charger
- Inverter
- Immersion
- Electric wiper
- Bilge pumps
- Bilge blower
- Trim
- Fuel/volt/trim/temp/oil guages
- Speed rev counters
- Horn

NAVIGATION

- Navigation lights
- Navman Tracker 5380
- VHF Navman 7200
- Depth log
- Compass

SAFETY EQUIPMENT

- Fire extinguisher (helm)
- Fire extinguisher (cabin)
- Boat Safety Certificate expires 06/2020

DECK EQUIPMENT

- Stainless steel pulpit rail
- Canopy
- Hinged GRP Radar arch
- Bathing platform
- Walk through wrap around windscreens

COMMENTS

PART EXCHANGE POSSIBLE

DISCLAIMER

The company normally acts as broker for the vendor who unless otherwise stated is not selling in the course of a business. Whilst every care has been taken in the preparation of these particulars the correctness is not guaranteed and they are intended as a guide only and do not constitute a part of any contract. A prospective buyer is strongly advised to check these particulars and where appropriate and at his own expense to employ a qualified marine surveyor to carry out a survey and/or to have an engine trial conducted which if conducted by us shall not imply any liability on our part.



Cockpit



Cockpit



Galley



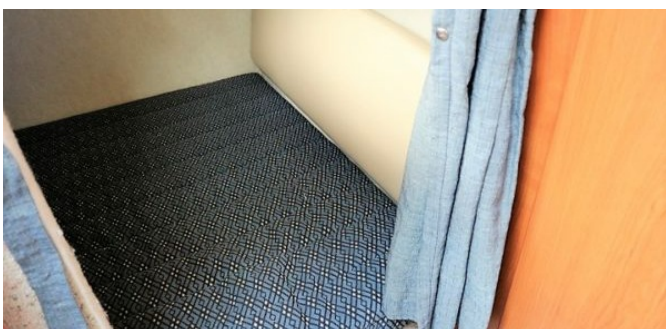
Forward berth arrangement



Dinette converts to berth



Galley



Mid cabin berth



Toilet/shower compartment