




HAINES

hainesmarine.co.uk

36 OFFSHORE

NYA 
NORFOLK YACHT AGENCY

COASTAL CRUISING

The 36 Offshore is suitable for both offshore and river/estuary cruising, a semi-displacement hull delivers excellent sea-going capabilities and a soft ride. All craft built to order with a range of single or twin engine options and Haines unquestionable build quality.





SPACE AND COMFORT

Light and airy throughout, with full opening 'slide and stack' patio doors connecting the saloon to the aft deck area. The large island double en-suite cabin forward and the generous open-plan saloon and galley space provides excellent accommodation for those longer stays onboard. The mid cabin option gives extended accommodation for guests, along with a converting saloon settee which provides further additional berths.

SALOON

Twin Webasto BlueSky electric hatches and sliding openings to both side windows (side door to starboard optional) provide plenty of light and ventilation to the helm / saloon area. Helm position to starboard with sliding double helm seat. Helm position with dash and full instrumentation, leather bound Haines stainless steel steering wheel, compass, engine controls, and footrest below helm. Electrics panel and battery isolators located in cupboard below helm seat, with sideboard unit aft of this area on the starboard side of saloon. Aft forward/ aft facing seat with pivoting backrest makes up to an L-shaped starboard side settee arrangement or can be used as part of the aft deck seating area.

Port side flip-over double crew seat with large drawer below, dropping down to make up port side L-shaped settee arrangement which also converts into an additional double berth (sliding with drop down stainless steel leg). Additional storage provided in the aft port side corner of the saloon by a cocktail cabinet (optional second fridge position) with a drawer above, and drawers below all settees. Access to aft cockpit through full opening 'slide and stack' patio doors.





FORWARD CABIN

Large island double berth with side steps and a large drawer below, further storage below mattress in a large locker, additional access to chain locker behind removable headboard. Bed side shelves with under deck lockers above, both extending aft from the chain locker bulkhead to the two port and starboard wardrobes. Wardrobes both complete with hanging rails, hooks and lighting. Two flush-fit overhead escape hatches allow plenty of natural light and air flow into the cabin. Mirror and coat hooks fitted to the aft bulkheads.

GALLEY

Galley to port with Avonite worktop fitted with a two burner gas hob with glass lid, double square stainless steel sinks and a through worktop waste bin. A 130 litre stainless steel refrigerator with cutlery drawer above, stainless steel 30 litre gas oven / grill with storage for pots and pans below. Large cupboard below worktop, outboard under deck cupboard and eye-level lockers on the forward and aft bulkheads provide ample storage.





TOILET / SHOWER

Toilet compartment to starboard with separate adjoining shower, Avonite worktops and surface mounted round ceramic sink with tall mixer tap. Manual toilet to waste tank on raised plinth. Storage provided by outboard shelving and under deck eye-level cupboard. Hinged acrylic shower door and a rainfall style shower with separate shower head and hose. Synthetic teak deck mat to floor of toilet compartment and a self draining GRP surface to shower compartment.

DECKS / AFT COCKPIT

Full opening 'slide and stack' patio doors open saloon to the aft deck space with forward facing seating across the full beam of the boat. A large storage compartment is accessed through a lazarette deck hatch, a gas locker and storage locker under aft seating, with additional storage provided in port / starboard wing lockers and port side under seat locker beside the gate.

An overhanging GRP peak houses three separate large skylights, one opening and two fixed. Stainless steel aft gate gives access from the aft cockpit to the bathing platform, allowing easy boarding from either the side or the aft end. Steps from aft cockpit to the wide side decks are helped with the conveniently positioned hand rails. Curved grab rails run along cabin side to forward pulpit. The foredeck accommodates a deck locker, a manual anchor winch and bow roller, with either a galvanized anchor or mud weight.



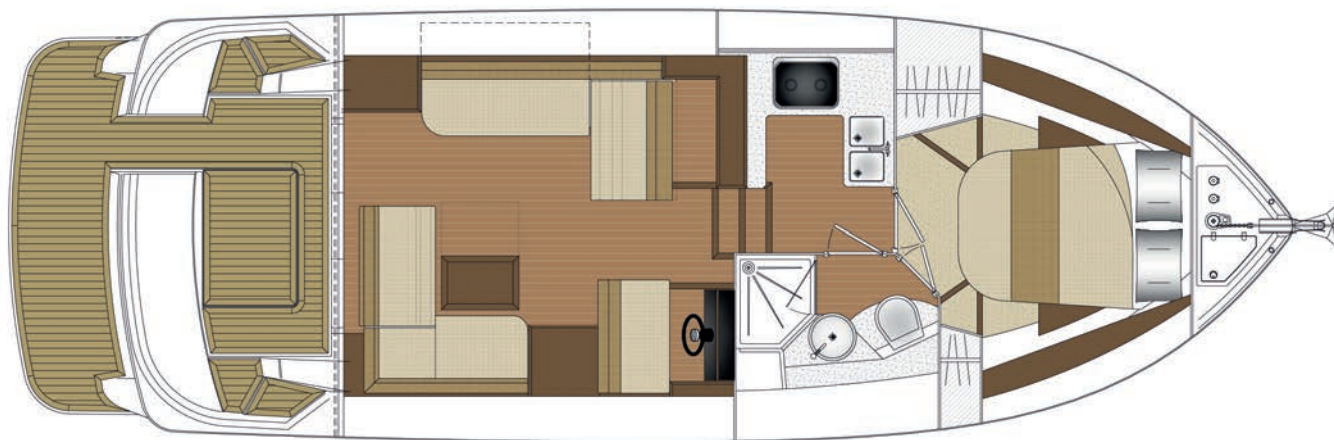
SPECIFICATION

KEY FEATURES

- Four or six berth sedan cruiser
- Semi-displacement hull
- Single or twin shaft drive diesel engines
- Offshore cruising capabilities
- Excellent slow speed handling
- Choice of interior timber finishes
- Bonded frameless windows
- Wide non-slip decks
- GRP bathing platform with transom gate for easy access
- Full opening 'slide and stack' patio doors
- Twin flush hatches to forward cabin
- Electric sunroofs to saloon
- Skylights to aft peak
- Speeds to 20 knots
- RCD Category B

DIMENSIONS

Overall Length	36ft 0in (10.97m)
Beam	12ft 4in (3.76m)
Air Draft	8ft 6in (2.59m)
Draft	3ft 1in (0.94m)



Designed & built in Great Britain

SPECIFICATION

CAPACITIES

- Fuel tank: 117.5 gallons / 534 litres (single engine),
2 x 90 gallons / 410 litres (twin engine)
- Water tank: 72.5 gallons / 330 litres
- Waste tank: 44 gallons / 200 litres
- Calorifier tank: 50 litres (complete with immersion)

HULL & CONSTRUCTION

- Bonded-in tinted windows
- Stainless steel rubbing strake
- Stainless steel deck cleats (x8)
- Full length stainless steel pulpit & grab rails
- Stainless steel water, fuel & holding tanks
- Non-Slip GRP deck finish
- Fenders (x6) & warps (x4)
- Bathing platform for rear & side access
- GRP Engine vents with stainless steel grill
& integrated (illuminated) foot step

ELECTRICAL

- 240v shore connection
- 12v electrical system
- 240v sockets: 4 x double 240v sockets
(to saloon, galley and forward cabin)
- 12v sockets: 1 x cigar socket (to helm position)
- Batteries: 3 x 130Ah AGM domestic batteries,
1 x 130Ah AGM engine battery
- Webasto electric saloon hatch
- Immersion heater
- Radio (Bluetooth, Aux & USB input)
- Stainless steel refrigerator: 130 litre
- Lighting (Interior): LED down lighters, pelmet lighting,
step lights, wardrobe lights, cocktail cabinet lighting,
under berth lighting and berth reading lights
- Lighting (Exterior): LED deck lights with remote control
- Navigation Lights: Port, starboard, stern and steaming lights
- Stainless steel twin trumpet horn
- 2 x electric wipers
- Whale water pump (with integrated accumulator tank)
- Whale electric bilge pump

SPECIFICATION

ENGINE OPTIONS

- Volvo D3-220hp (220hp) 14 knots
- Volvo D4-270hp (270hp) 16 knots
- Volvo D4-320hp (320hp) 18 knots
- Nanni T8-370hp (370hp) 19 knots
- Yanmar 8LV-370hp (370hp) 19 knots
- Twin Volvo D3-200hp (2 x 200hp) 19 knots
- Twin Volvo D3-220hp (2 x 220hp) 20 knots

SAFETY

- Electrical & manual bilge pumps
- 2 x auto fire extinguisher in engine compartment (each 2kg)
- 2 x manual fire extinguishers (each 1kg)
- Fire blanket
- Wide non-slip decks
- Life buoy & boat hook
- Stainless steel anchor bow roller
- Anchor or mud weight with chain
- Manual winch

GAS SYSTEM

- Smev 30 litre oven and grill
- Smev 2 burner hob with glass top
- 2 x 3.9kg propane gas bottles
(including automatic changeover with OPSO)

MISCELLANEOUS

- Avonite worktops to galley and toilet compartment
- Flip-up saloon navigators seat (converting to settee arrangement)
- Outside screen cover
- 2 x saloon foot stools
- Ensign (1 1/4 yard) with stainless steel flag staff
- Stainless steel / leather bound steering wheel
- Skylights (one opening) to aft peak
- Synthetic teak decking to bathing platform
- Compass to helm
- Haines pennant



UK Sales

NYA - Brundall Office
Brundall Bay Marina, Brundall,
Norfolk, NR13 5PN
[01603 713434](tel:01603713434)

NYA - Horning Office
Ferry Road, Lower Street,
Horning, Norfolk, NR12 8PS
[01603 211033](tel:01603211033)

boats@nya.co.uk
nya.co.uk



hainesmarine.co.uk